



# GALAXY® GX2 Automated Test System

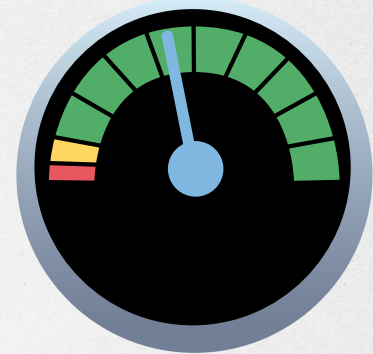


WE KNOW WHAT'S AT STAKE.

## Simplicity Counts

The new GALAXY GX2 Automated Test System provides simple and intelligent testing and calibration of ALTAIR® and ALTAIR® PRO Single-Gas Detectors, as well as ALTAIR® 4X and ALTAIR® 5X Multigas Detectors, driven by the most advanced technology available in any portable gas detector: MSA XCell® Sensors.

*This easy-to-use automated test stand offers high performance as either a stand-alone unit or an integrated portable detector management system, enabling total data access and control of MSA's ALTAIR Gas Detector fleet. Once any ALTAIR Family Gas Detector is placed within the GALAXY GX2 System, it can be tested, calibrated and charged automatically. Flexibility allows for up to 10 test stations, four cylinder holders and multi-unit charger within one GALAXY GX2 System detector bank.*



### Ease of Use

#### Calibrate & Test Effortlessly

- Easy setup, simple use with touch-free testing.
- Color touch screen enhances user experience at the test stand.
- Can be used with a PC or as a stand-alone system, the perfect solution for large fleet end users, as well as for smaller applications.
- Automated test system provided in many commonly spoken languages.
- Your MSA ALTAIR 5X, 5X PID, 4XR, 4XM, 2X, Pro, and Single Gas Detectors are always ready for use. If you're faced with an urgent, short-notice situation, these units are ready for deployment, ideal for emergency applications.

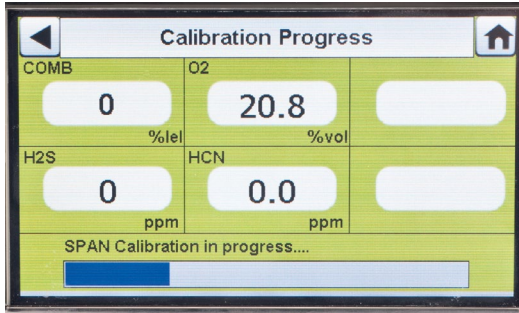


### Cost of Ownership

#### Save Time, Save Gas, & Save Money

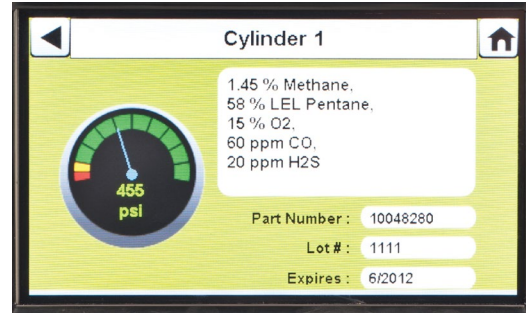
- Exceeds 50% reduction in cost of ownership, including calibration gas expenses when combined with high-performance MSA XCell Sensors.
- Faster total testing of ALTAIR Family Gas Detectors.
- Test up to 10 gas detectors simultaneously in the time most competitive systems take to test one device.
- RFID-tagged calibration gas.





## Color Touch Screen for Ease of Setup and Viewing; No touch Operation Needed to Calibrate or Bump Test

Clear and intuitive navigation via large touch buttons and scrolling arrows. When test completes, users view results on test stand popup screen and detailed information on PC dashboard.



## RFID Automated Calibration Gas Setup, Status Alerts, and Traceability

Gas cylinder information necessary for successful calibration is automatically entered when using RFID-tagged gas cylinders, providing users with exceptionally easy setup. Onscreen gas cylinder pressure gauge shows multiple cylinder statuses simultaneously.



## Visual Indicators on GALAXY GX2 System and Software

Status at a glance is provided through various light indicators: test stand pass/fail LED, charging progress LEDs on multi-unit charger, and lighted cylinder band on electronic cylinder holder for low gas and expiration date warning display.



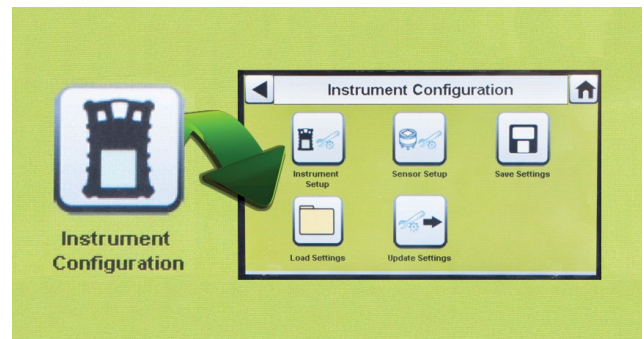
## Global Platform—Many Language Options

Multiple languages are available to serve customers globally. Easily change languages via onscreen menu. Languages chosen other than English are those most widely spoken.



## Simultaneous Testing of Up to 10 Gas Detectors

Calibrate up to 10 gas detectors simultaneously in less time than it takes most competitive units to test one. Patented gas flow process increases pressure from demand flow regulator to deliver consist gas flow from one to 10 units. Connect up to 10 test stands and four cylinder holders to perform simultaneous tests.



## Securely Configure Gas Detectors at the Touch of a Button



## The MSA Safety Commitment

*From the latest in sensor technology to instrument design and manufacturing, MSA Safety has the capabilities and expertise to support your portable gas detection challenges.*





# MSA Grid Fleet Manager

As a safety manager or industrial hygienist, you have aggressive safety goals. You need to ensure that your workers and work sites are safe and compliant with government regulations and corporate safety policies.

Gas detection is a big part of your safety program and requires lots of attention, administrative activities, and reporting—resulting in distractions that prevent you from accomplishing your larger safety objectives.

The MSA Grid Fleet Manager can help you minimize those interruptions and efficiently and proactively manage your fleet of portable gas detection. With this service you can consolidate and streamline all your gas detection related activities in one place—establishing a single source of truth for all your detection records.



## Information Access

- Receive a daily e-mail notification about your fleet’s status. Quickly discern what needs your attention and take action.
- Access your fleet information easily—at anytime and from anywhere.
- Find, download and share reports as you need them—calibrations, detector records or alarms.



## Fleet Compliance

- Ensure your gas detectors are ready for work (bump tested, calibrated and with sensors functioning properly). Reduce downtime.
- Proactively decommission any equipment that requires maintenance.
- Understand which equipment are in use (by whom) and which ones are available.



## Risk Assessment

- See the data from, your devices and identify hazards your workers are exposed to.
- Understanding the root cause of incidents and initiate preventive measures.
- Translate findings into quality and worksite safety processes and actionable workflows.



## Worker Compliance

- Drive accountability for the equipment by assign your fleet’s detectors to a company, department, and worker.
- Understand if the devices are being properly used and operated.
- Identify training opportunities based on equipment usage information.

## Features

Key Features	Benefits
<b>USER-FRIENDLY WEB-BASED INTERFACE</b>	Intuitive and accessible 24/7 with an Internet connection.
<b>RECORD KEEPING AND REPORTING</b>	Quickly search equipment records for in-depth information about device status, test results, and alarms—and generate reports as needed.
<b>DAILY FLEET STATUS REPORT EMAIL</b>	Each morning, you'll receive a concise fleet summary e-mail. If your fleet is healthy, you're done!
<b>ASSIGN EQUIPMENT LABELS</b>	Assign your equipment to locations, departments, workers and more—making it easier to search your records and manage Grid permissions later.
<b>AUTOMATIC UPDATES</b>	We publish improvements every few weeks, so your Grid experience gets easier and more valuable with each passing month. Updates are automatic and IT-free.
<b>MULTIPLE LOCATIONS MANAGEMENT</b>	Manage as many devices across as many physical locations as you need with one Grid account.
<b>SECURE CLOUD ENVIRONMENT</b>	Your data is stored in exclusive secured spaces to ensure and preserve data privacy and integrity.



## GALAXY GX2 System Test Stand

	1 VALVE (for use with 1 calibration gas cylinder)		4 VALVE (for use with 1-4 calibration gas cylinders)	
	Charging	No-charging	Charging	No-charging
ALTAIR® PRO/2X SINGLE-GAS DETECTOR	—	10128663 (UK)/10128653 (EU)	—	10128662 (UK)/10128652 (EU)
ALTAIR® 4/4X MULTIGAS DETECTOR	10128659 (UK)/10128639 (EU)	10128661 (UK)/10128651 (EU)	10128658 (UK)/10128638 (EU)	10128660 (UK)/10128640 (EU)
ALTAIR® 5/5X MULTIGAS DETECTOR	10128655 (UK)/10128635 (EU)	1012865 (UK)/10128637 (EU)	10128654 (UK)/10128634 (EU)	10128656 (UK)/10128636 (EU)

The GALAXY GX2 System test stand comes with pre-configured plugs, barbs, fresh air filter, power supply with corresponding plug, spare parts kit (*gas tubing, barbs Automated Test System and plugs*), Ethernet cable (*short cable for connection between test stands*), and screen protector. Please see ordering information below for further system components, including electronic cylinder holder (*includes regulator*) or non-electronic cylinder holder (*without regulator*), digital secure USB key, end cap, and multi-unit charger.

### Calibration Gas

P/N	Description	Cylinder Size
10128160	1.45% CH <sub>4</sub> , 15.0% O <sub>2</sub> , 60 ppm CO, 20 ppm H <sub>2</sub> S	34 L
10053022	1.45% CH <sub>4</sub> , 15.0% O <sub>2</sub> , 60 ppm CO, 20 ppm H <sub>2</sub> S	58 L
10207603	2.50% CH <sub>4</sub> , 15.0% O <sub>2</sub> , 60 ppm CO, 20 ppm H <sub>2</sub> S	58 L
10122425	1.45% CH <sub>4</sub> , 15.0% O <sub>2</sub> , 60 ppm CO, 20 ppm H <sub>2</sub> S, 10 ppm SO <sub>2</sub>	34 L
10122426	1.45% CH <sub>4</sub> , 15.0% O <sub>2</sub> , 60 ppm CO, 20 ppm H <sub>2</sub> S, 10 ppm SO <sub>2</sub>	58 L
10079807	25 ppm NH <sub>3</sub>	34 L
10120482	10 ppm H <sub>2</sub> S	34 L
711072	10 ppm HCN	34 L
10102853	1.45% CH <sub>4</sub> , 15.0% O <sub>2</sub> , 60 ppm CO, 20 ppm H <sub>2</sub> S, 2.5% CO <sub>2</sub>	58 L
10169196	100 ppm isobutylene	34 L
10174844	1.45% CH <sub>4</sub> , 15.0% O <sub>2</sub> , 60 ppm CO	103 L
10029522	0.5 ppm PH <sub>3</sub>	34 L
10011939	10 ppm Cl <sub>2</sub>	34 L
10011727	40 ppm H <sub>2</sub> S	34 L
711082	2 ppm Cl <sub>2</sub>	34 L

### Accessories

P/N	Description
10105756	Electronic cylinder holder
10125135	Non-electronic cylinder holder
10127111	4 GB SD card
10123937	Digital secure USB key
10125907	End cap
10127423	ALTAIR 4XR Detector Multi-unit Charger, EU
10127424	ALTAIR 4XR Detector Multi-unit Charger, UK
10127428	ALTAIR 5X/5X PID Detector Multi-unit Charger, EU
10127429	ALTAIR 5X/5X PID Detector Multi-unit Charger, UK
10127518	12" (TBR) Ethernet cable for test stand to test stand connection
10126657	DIN rail clip kit (2 clips & screws per kit)
10082834	USB IR dongle
10034391	Demand flow regulator (universal)
710289	Large capacity (<3000 psi) demand regulator
10126268	Vehicle power adapter

### Technical Specifications

<b>OPERATING TEMPERATURE</b>	0-40°C (32-104°F), GALAXY GX2 System
<b>POWER INPUT</b>	
POWER MODULE	100-240 VAC, 47-63 Hz
OPTIONAL VEHICLE MODULE	9-32 VDC
<b>PHYSICAL CHARACTERISTICS</b>	
TEST STAND	<b>Height</b> 11.80" (299.72 mm) <b>Width</b> 6.50" (165.10 mm) <b>Depth</b> 7.90" (200.66 mm) <b>Material</b> acrylonitrile butadiene ABS
CYLINDER HOLDER	<b>Height</b> 11.80" (299.72 mm) <b>Width</b> 6.50" (165.10 mm) <b>Depth</b> 6.10" (154.94 mm) <b>Material</b> acrylonitrile butadiene ABS
MULTI-UNIT CHARGER	<b>Height</b> 11.80" (299.72 mm) <b>Width</b> 6.50" (165.10 mm) <b>Depth</b> 6.44" (163.58 mm) <b>Material</b> acrylonitrile butadiene ABS

More Galaxy GX2 Accessories and Calibration Gas options available. Check on [msasafety.com](https://msasafety.com) or reach out to MSA Safety Customer Service.

Note: This Bulletin contains only a general description of the products shown. While product uses and performance capabilities are generally described, the products shall not, under any circumstances, be used by untrained or unqualified individuals. The products shall not be used until the product instructions/user manual, which contains detailed information concerning the proper use and care of the products, including any warnings or cautions, have been thoroughly read and understood. Specifications are subject to change without prior notice. MSA is a registered trademark of MSA Technology, LLC in the US, Europe, and other Countries. For all other trademarks visit <https://us.msasafety.com/Trademarks>.

MSA operates in over 40 countries worldwide. To find an MSA office near you, please visit [MSAsafety.com/offices](https://msasafety.com/offices).